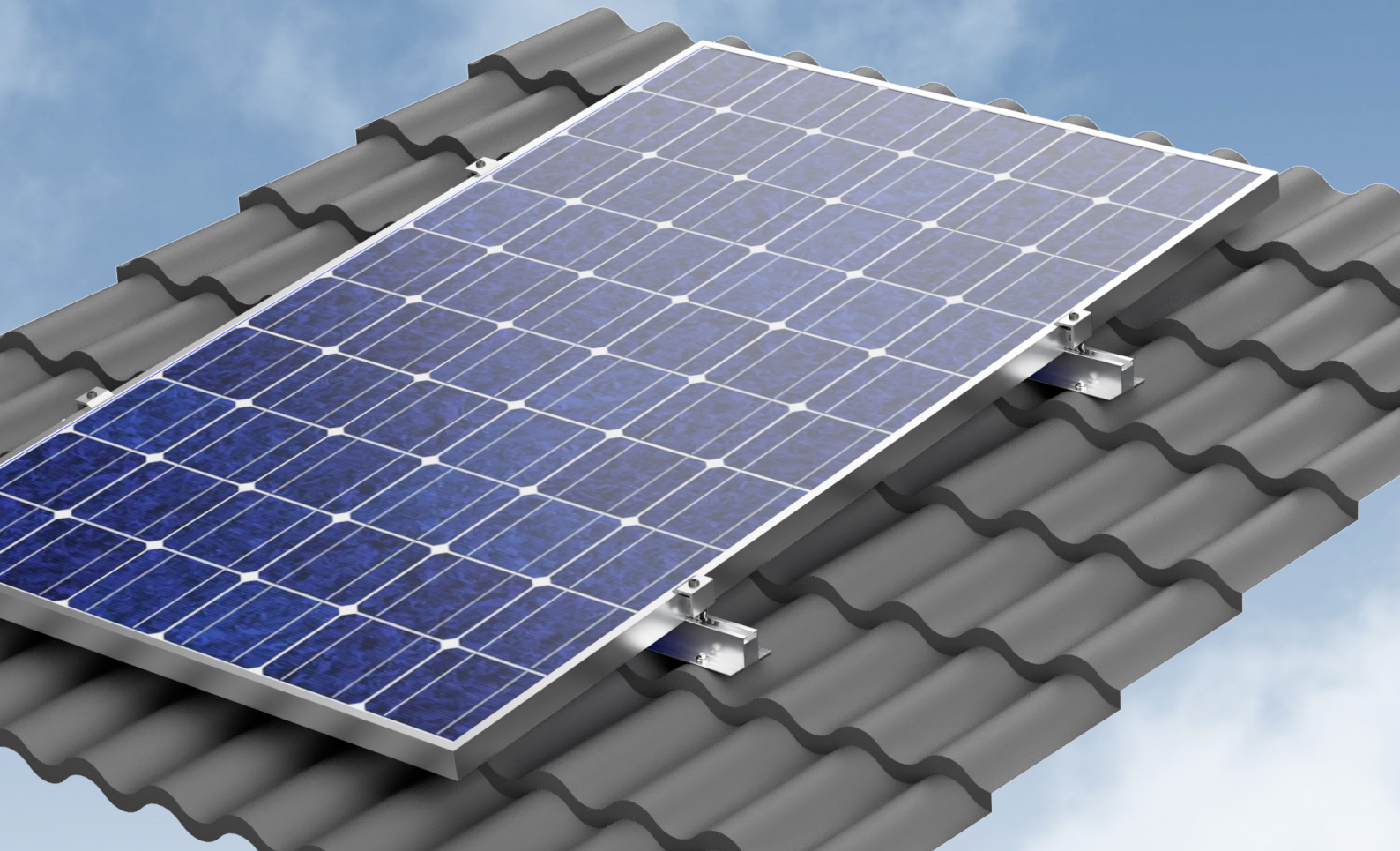


FIRMLY FASTEN PV TO METAL ROOF SHEETS



MS+ P



The smart PV mounting system for residential metal roof tiles

Metal sheets are increasingly being used as a roof covering in new builds and renovations. Mounting photovoltaic modules on these roof coverings is a challenge for installers. Renusol's MS+P mounting system is the perfect solution, setting new standards for the installation of PV systems on metal sheet roofing. It's extremely compact as well as quick and easy to install. With its low volume, minimal components and a streamlined design, not to mention a truly impressive price-performance ratio, you're sure to be impressed.

Yes, that's all

- Short rails prevent temperature expansion issues
- Fasten without penetrating metal roof covering
- Suitable for all PV panel heights

Quick and easy

- Installation takes less than 10 minutes per kWp
- Pre-assembled solution
- No pilot drilling

Multifunctional

- Suitable for aluminium and steel
- Flexibility enables use with a variety of roof sheets

Less is more

- Efficiently packed for easy handling on building sites
- Ready to install
- 5 kWp capacity fits inside a shoebox

If you have any further questions, please don't hesitate to contact us:

Sales department

Telephone: +49 221 788707-19
Fax: +49 221 788707-97
Email: sales-support@renusol.com

Technical support

Telephone: +49 221 788707-29
Fax: +49 221 788707-98
Email: technical-support@renusol.com

Renusol Europe GmbH
Piccoloministraße 2
51063 Cologne
Germany

Telephone: +49 221 788707-0
Fax: +49 221 788707-99
Email: info@renusol.com

www.renusol.de

