

## Pitched Roof Enquiry Form

This Enquiry Form contains form fields.

### Contact Details

Company Name: \_\_\_\_\_

Street, Number: \_\_\_\_\_

City, Post code: \_\_\_\_\_

Contact Person: \_\_\_\_\_

Phone/Fax: \_\_\_\_\_

E-Mail: \_\_\_\_\_

### Project Details

Projekt Name: \_\_\_\_\_

Street, Number: \_\_\_\_\_

City, Post Code: \_\_\_\_\_

County: \_\_\_\_\_

Contact Person: \_\_\_\_\_

Contact Person Phone: \_\_\_\_\_

Wind load: \_\_\_\_\_ kN/m<sup>2</sup>    Snow load: \_\_\_\_\_ kN/m<sup>2</sup>  
(if known)

### Terrain Category

**Town**



**Country**



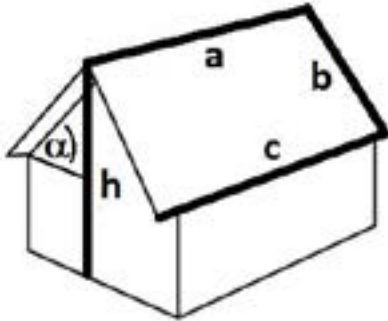
**Sea**



Distance to the Sea: \_\_\_\_\_ km

Distance to the edge of town: \_\_\_\_\_ km

## Roof dimensions



Gabled roof

Ridge length a: \_\_\_\_\_ m

Shed roof

Ridge to eaves b: \_\_\_\_\_ m

Hipped roof (b<d)

Eave length c: \_\_\_\_\_ m

Other:  
(Please add a drawing to the attachment)

Slope: \_\_\_\_\_ °

Building height h: \_\_\_\_\_ m

## Roof substructure (not needed for system MS+, MS+P)

Wood

Steel

Concrete

other: \_\_\_\_\_

Rafter roof

Purlin roof

Rafter-/Purlin spacing A: \_\_\_\_\_ mm



## Rafter-/Purlin shape (not needed for ballasted Systems)

Rectangular

square beam

I - beam

U - beam

Z - beam



Usuable depth of engagement d: \_\_\_\_\_ mm

## Roofing

Manufacturer Type: \_\_\_\_\_

Pan tile

Slate

Plain tile

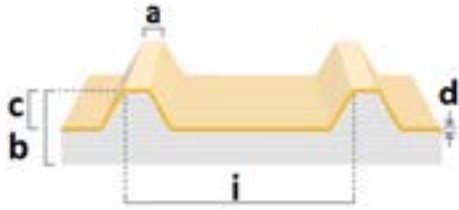
Sandwich sheet/  
Corrugated sheet/  
Sandwich

Steel

Aluminium

Fibre cement

## Sandwich sheet/ Corrugated sheet - dimensions



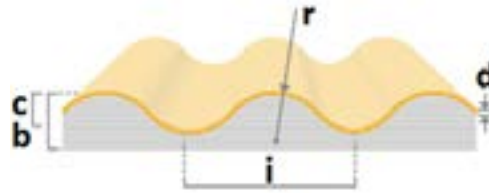
Crown width a: \_\_\_\_\_ mm

Crown spacing i: \_\_\_\_\_ mm

Trapezoidal peak height c: \_\_\_\_\_ mm

Sandwich height b: \_\_\_\_\_ mm

Sheet Thickness d: \_\_\_\_\_ mm



Radius r: \_\_\_\_\_ mm

Peak spacing i: \_\_\_\_\_ mm

Corrugation height c: \_\_\_\_\_ mm

Sandwich height b: \_\_\_\_\_ mm

Sheet thickness d: \_\_\_\_\_ mm

For trapezoidal sheet:

Connection to rafter/ purlin

Connection to roof profile with MS+, MS+P

Standing seam

Manufacturer Type: \_\_\_\_\_



Seam spacing: \_\_\_\_\_ mm

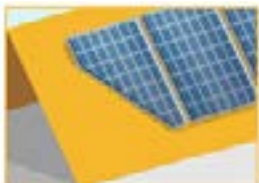
## Layout details

In-roof-system

Roof-top-system

Intersole

MS+, MS+P, VS+



Portrait/  
Vertical

Landscape/  
Horizontal

System size \_\_\_\_\_ kWp

Maximum possible

## Component color

Clamps: Black Silver

Rails: Black Silver

Intersole flashing sheets: Black Silver

Intersole Ubiflex flashing: Black Red

Number of rows: \_\_\_\_\_

Number of columns: \_\_\_\_\_

## Photovoltaic Modul dimension

Manufacturer/Type: \_\_\_\_\_

Framed

Laminate

Module length: \_\_\_\_\_ mm

Module width: \_\_\_\_\_ mm

Module thickness: \_\_\_\_\_ mm

For non-uniform layouts please use the grid below or provide a plan/ drawing.

## Further notes:

For technical enquiries and assistance with you project please don't hesitate to contact our technical department.